

PLC

RS485 A (115Kb/s)

RS485 B

O A/OK (source_out 24Vdc/1Amp)

O B/REJECT (source_out 24Vdc/1Amp)

IN 0/START (Pulse_IN /10mS-min)

+24VDC (MAX/1.5Amp)

GND

(source_out 24Vdc/1Amp)

PC

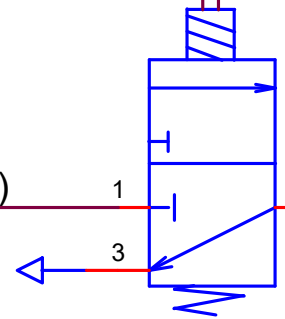
Bluetooth-BLE-802.15.1:



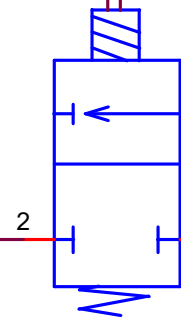
O_B	O_A	Status
0	0	Wait
1	0	Leak_KO
0	1	Test_Ok
1	1	Test_Run

FILTERED AIR
5µm

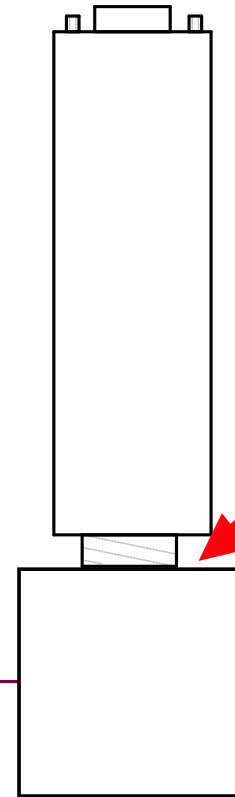
6BAR(MAX)



FILLING



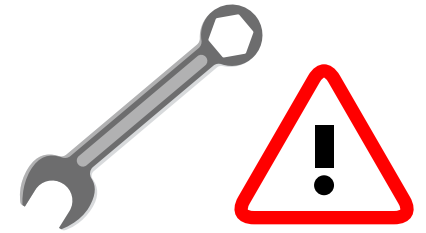
TEST



TEST



Download Software and Documentations



GENTLY TIGHTEN